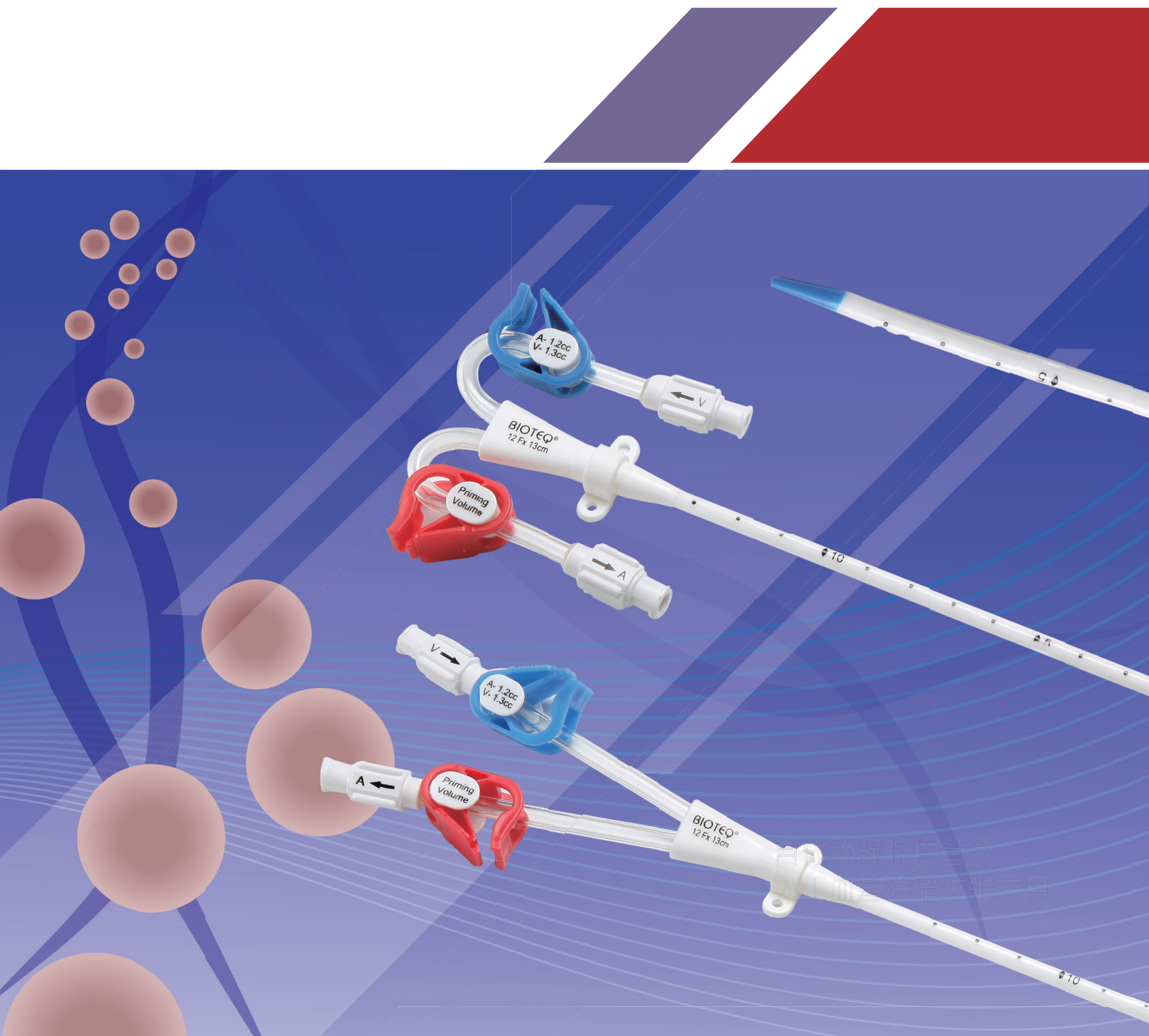


BIOTEQ[®]
Improving lives

BIOTEQUE CORPORATION

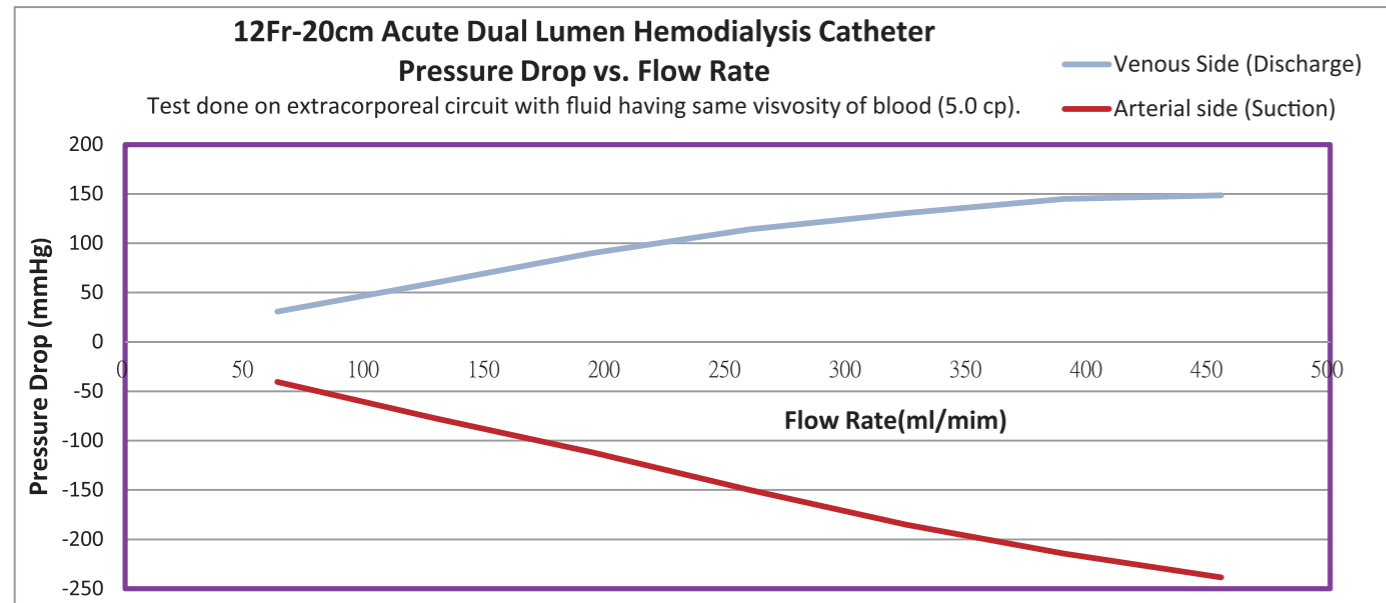


**Acute
Hemodialysis
Catheter**

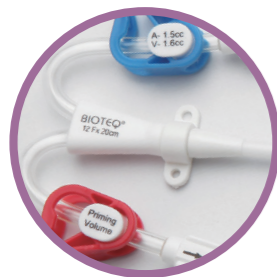
www.bioteq.com.tw

The **BIOTEQ**® hemodialysis catheter features high flow rates while keeping arterial and venous pressures low.

Performance Curve



Enhanced Suture Wing Securement



Suture wing with a minimum 5Kg tensile strength, which is not easily detached from catheter.

Double-D Catheter Cross Section



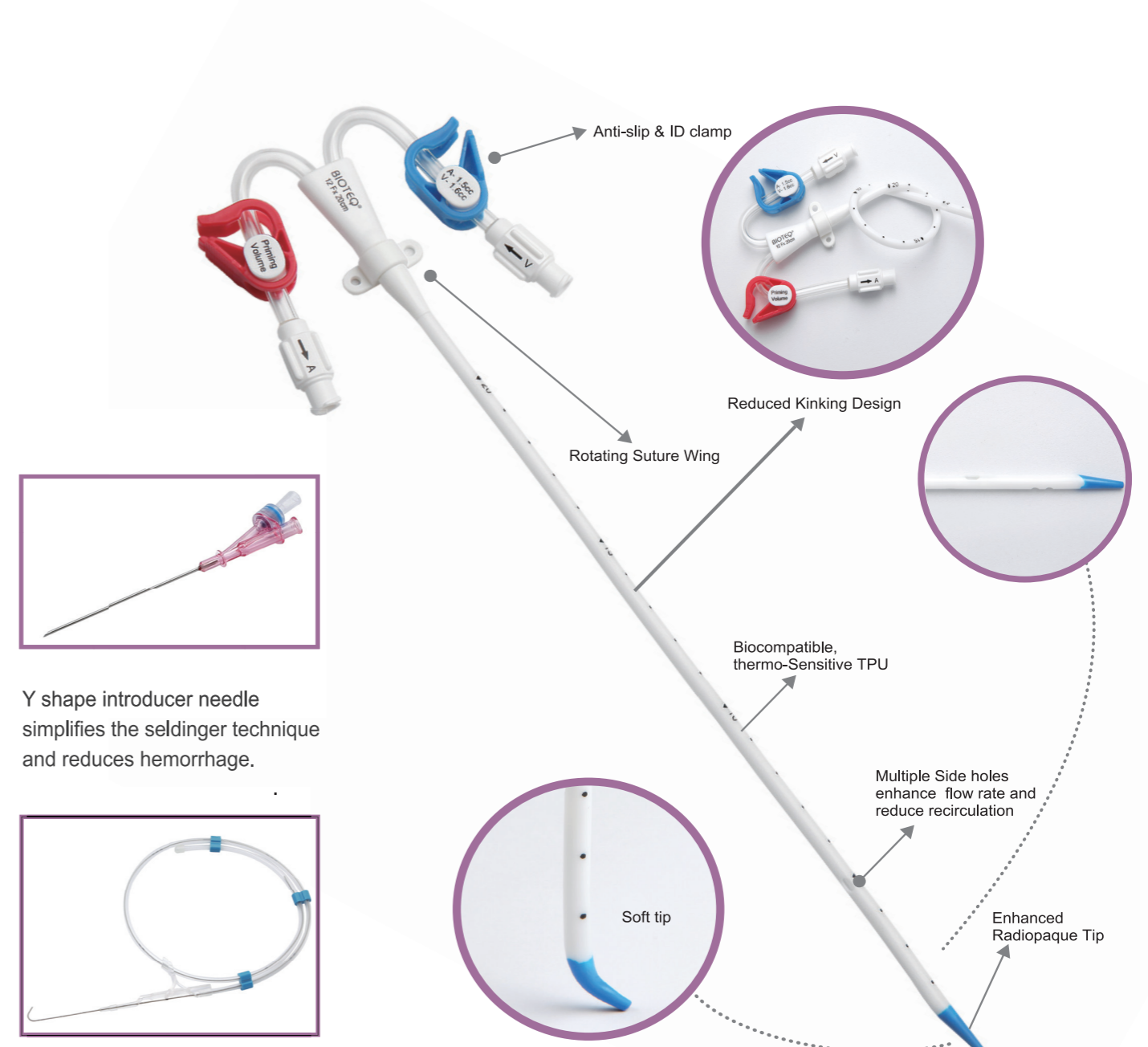
Large-bore, double-lumen acute hemodialysis catheter has stiffer walls and do not easily collapse.

Coding

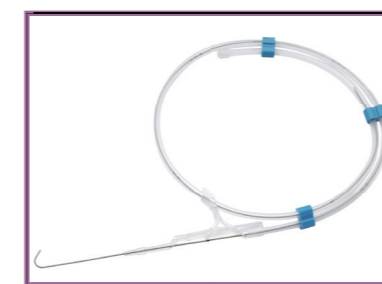
CATALOG NUMBER CODING											
BT-HD-K S 2 2 1 1 - 12 20 - N Y - 1D											
Product	Package	Indwelling Duration	Catheter Lumen	Extension	Catheter	Catheter Tip	Size (Fr.)	Catheter Length(cm)	Guidewire	Needle & Syringe	Dilator Quantity Included in Kit
HD=Hemodialysis Catheter	C=Catheter K=Kit	S= Short term	2 = Dual Lumen	1 = Straight 2 = Curve	1 = Straight	1 = Straight	11Fr., 11.5Fr., 12Fr., 13.5Fr.	12-25cm, 12, 13, 14, 15, 16, 17, 18, 19, 20, 21, 22, 23, 24, 25	38= 0.038" Stainless steel(304SS) GW N=0.035" Nitinol GW 38N=0.038" Nitinol GW 0.035" Stainless steel (304SS) GW is included if not specified.	B=Blue Guidewire Introducer Syringe+ Introducer Needle Y=Y shape Introducer Needle + Syringe Syringe+Introducer needle are included if not specified.	1D= One Stepped Dilator Included; Two Dilators are included if not specified.
Catalog Numbers Beginning with "BT-" = Bioteque											

Features Highlights

- Thermo-sensitive and radiopaque TPU catheter.
- Soft tip reduces risk of vascular trauma.
- High flow rates up to 300 cc/min at low venous pressures of less than 250 mmHg.
- Optimal positioning of arterial and venous side holes to avoid recirculation.
- Radiopaque catheter ensures the correct placement of the catheter tip.
- Anti-slip clamps designed to help clamping the extension tubes easily and correctly.
- Smooth inner catheter channels reduce the formation of the turbulence of the blood flow.



Y shape introducer needle simplifies the seldinger technique and reduces hemorrhage.



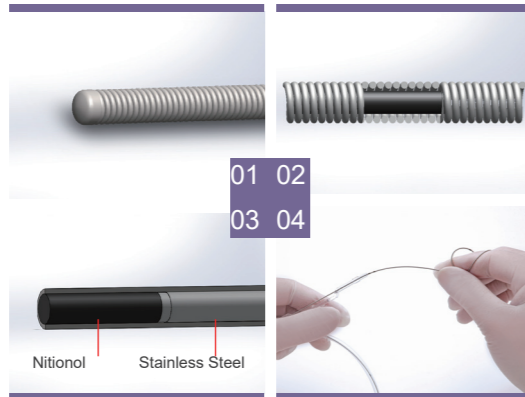
Marked guidewire with advancer allow physician to operate with single hand.

Accessories to Hemodialysis catheter kit



Select Guidewire diameter and material

01. Soft Tip Polymer Specialty Guide Wires without hydrophilic coating.



02. Nitinol Core to tip design: Good tactile feedback, easy to control, hard head end suitable for passing through lesions with large resistance.

03. Welding process to join nitinol to stainless steel, system integration is greatly improved.

04. Titanium alloy: Memory metal, good elasticity, preventing guide wire from kinking, good flexibility and durability.

Abbreviation Code	Optional GW
Leave cell "blank" if applicable	0.035" Stainless steel (304SS) GW x 1pc
38	0.038" Stainless steel (304SS) GW x 1pc
N	0.035" Nitinol GW x 1pc
38N	0.038" Nitinol GW x 1pc



The transparent Coil Guide Wire Dispenser, with Advancement Mechanism design allows the doctors to visualize the marking on the guidewire help ensure that the guidewire is inserted to the proper depth and can also help the medical professional estimate the position of the catheter tip inside the patient's body.

Select syringe type and Introducer Needle Type

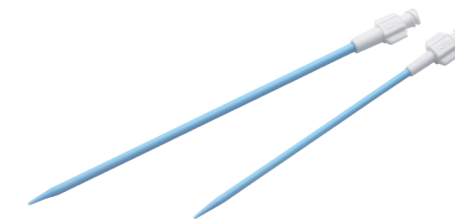


5ml Syringe x 1 pc+18G Introducer Needle x 1pc

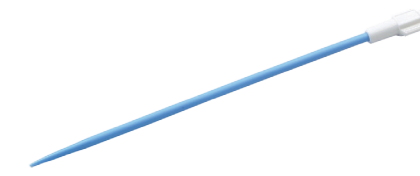
5ml Blue Guidewire Introducer Syringe x 1pc+18G Introducer Needle x 1pc

5ml Syringe x 1 pc+18G Y Shape Introducer Needle x 1pc

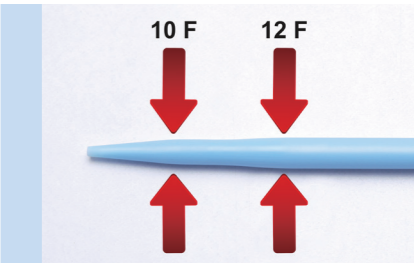
Catheter size v.s. Dilator Specification



Dilators



Stepped Dilators



The Stepped Dilator is used for venous dilation, tracking over a guidewire prior to invasive catheter placement. The dilator smoothly transitions from 10F to 12 F.

Catheter French Size	Included Dilators	Included Stepped Dilators	Injection Cap Accessories	Other Kit Accessories
8F	9F	-	*2 Injection caps	*Scalpel x 1 pc
9F	9F	-		
10F	10F	-		*Wound Dressing x 1 pc
11F	10F, 12F	12F		
11.5F	10F, 12F	12F		
12F	10F, 12F	12F		*Drape x 1 pc
13.5F	10F, 14F	-		

CATALOGUE NUMBER CODING												
BT	-	C	S	2	2	1	1	-	08	13	-	D
Product	Package	Indwelling Duration	Catheter Lumen	Extension	Catheter	Catheter Tip	Size(Fr.)	Catheter Length(cm)	Dilator Q'ty Included in Kit			
HD:Hemodialysis Catheter Catalogue Numbers Beginning with "BT-"=Bioteque	C=Catheter K=Kit	S=Short Term	2=Dual Lumen	1=Straight 2=Curved	1=Straight	1=Straight	8Fr., 9Fr., 10Fr., 11Fr., 11.5Fr., 12Fr., 13.5Fr	12~25cm, 12, 13, 14, 15, 16, 17, 18, 19, 20, 21, 22, 23, 24, 25	D= One Stepped Dilator Included; No dilator is included if not specified.			

HD Catheter without Accessory

Code	No. of Lumen	Size (Fr)	Length (cm)	Extension Tube	Catheter	Code	No. of Lumen	Size (Fr)	Length (cm)	Extension Tube	Catheter
BT-HD-CS2111-0813	2	8	13	Straight	Straight	BT-HD-CS2211-1116	2	11	16	Curved	Straight
BT-HD-CS2111-0816	2	8	16	Straight	Straight	BT-HD-CS2211-1120	2	11	20	Curved	Straight
BT-HD-CS2111-0820	2	8	20	Straight	Straight	BT-HD-CS2211-1125	2	11	25	Curved	Straight
BT-HD-CS2211-0813	2	8	13	Curved	Straight	BT-HD-CS2111-11516	2	11.5	16	Straight	Straight
BT-HD-CS2211-0816	2	8	16	Curved	Straight	BT-HD-CS2111-11520	2	11.5	20	Straight	Straight
BT-HD-CS2211-0820	2	8	20	Curved	Straight	BT-HD-CS2111-11525	2	11.5	25	Straight	Straight
BT-HD-CS2111-0913	2	9	13	Straight	Straight	BT-HD-CS2211-11516	2	11.5	16	Curved	Straight
BT-HD-CS2111-0916	2	9	16	Straight	Straight	BT-HD-CS2211-11520	2	11.5	20	Curved	Straight
BT-HD-CS2111-0920	2	9	20	Straight	Straight	BT-HD-CS2211-11525	2	11.5	25	Curved	Straight
BT-HD-CS2211-0913	2	9	13	Curved	Straight	BT-HD-CS2111-1216	2	12	16	Straight	Straight
BT-HD-CS2211-0916	2	9	16	Curved	Straight	BT-HD-CS2111-1220	2	12	20	Straight	Straight
BT-HD-CS2211-0920	2	9	20	Curved	Straight	BT-HD-CS2111-1225	2	12	25	Straight	Straight
BT-HD-CS2111-1013	2	10	13	Straight	Straight	BT-HD-CS2211-1216	2	12	16	Curved	Straight
BT-HD-CS2111-1016	2	10	16	Straight	Straight	BT-HD-CS2211-1220	2	12	20	Curved	Straight
BT-HD-CS2111-1020	2	10	20	Straight	Straight	BT-HD-CS2211-1225	2	12	25	Curved	Straight
BT-HD-CS2211-1013	2	10	13	Curved	Straight	BT-HD-CS2111-13516	2	13.5	16	Straight	Straight
BT-HD-CS2211-1016	2	10	16	Curved	Straight	BT-HD-CS2111-13520	2	13.5	20	Straight	Straight
BT-HD-CS2211-1020	2	10	20	Curved	Straight	BT-HD-CS2111-13525	2	13.5	25	Straight	Straight
BT-HD-CS2111-1116	2	11	16	Straight	Straight	BT-HD-CS2211-13516	2	13.5	16	Curved	Straight
BT-HD-CS2111-1120	2	11	20	Straight	Straight	BT-HD-CS2211-13520	2	13.5	20	Curved	Straight
BT-HD-CS2111-1125	2	11	25	Straight	Straight	BT-HD-CS2211-13525	2	13.5	25	Curved	Straight

Remarks:

We can customize according to your design and requirements. Other catheter lengths (12 cm to 25 cm) are available upon request.

HD Catheter with Dilator

Code	No. of Lumen	Size (Fr)	Length (cm)	Extension Tube	Catheter	Code	No. of Lumen	Size (Fr)	Length (cm)	Extension Tube	Catheter
BT-HD-CS2111-0813-D	2	8	13	Straight	Straight	BT-HD-CS2211-1116-D	2	11	16	Curved	Straight
BT-HD-CS2111-0816-D	2	8	16	Straight	Straight	BT-HD-CS2211-1120-D	2	11	20	Curved	Straight
BT-HD-CS2111-0820-D	2	8	20	Straight	Straight	BT-HD-CS2211-1125-D	2	11	25	Curved	Straight
BT-HD-CS2211-0813-D	2	8	13	Curved	Straight	BT-HD-CS2111-11516-D	2	11.5	16	Straight	Straight
BT-HD-CS2211-0816-D	2	8	16	Curved	Straight	BT-HD-CS2111-11520-D	2	11.5	20	Straight	Straight
BT-HD-CS2211-0820-D	2	8	20	Curved	Straight	BT-HD-CS2111-11525-D	2	11.5	25	Straight	Straight
BT-HD-CS2111-0913-D	2	9	13	Straight	Straight	BT-HD-CS2211-11516-D	2	11.5	16	Curved	Straight
BT-HD-CS2111-0916-D	2	9	16	Straight	Straight	BT-HD-CS2211-11520-D	2	11.5	20	Curved	Straight
BT-HD-CS2111-0920-D	2	9	20	Straight	Straight	BT-HD-CS2211-11525-D	2	11.5	25	Curved	Straight
BT-HD-CS2211-0913-D	2	9	13	Curved	Straight	BT-HD-CS2111-1216-D	2	12	16	Straight	Straight
BT-HD-CS2211-0916-D	2	9	16	Curved	Straight	BT-HD-CS2111-1220-D	2	12	20	Straight	Straight
BT-HD-CS2211-0920-D	2	9	20	Curved	Straight	BT-HD-CS2111-1225-D	2	12	25	Straight	Straight
BT-HD-CS2111-1013-D	2	10	13	Straight	Straight	BT-HD-CS2211-1216-D	2	12	16	Curved	Straight
BT-HD-CS2111-1016-D	2	10	16	Straight	Straight	BT-HD-CS2211-1220-D	2	12	20	Curved	Straight
BT-HD-CS2111-1020-D	2	10	20	Straight	Straight	BT-HD-CS2211-1225-D	2	12	25	Curved	Straight
BT-HD-CS2211-1013-D	2	10	13	Curved	Straight						
BT-HD-CS2211-1016-D	2	10	16	Curved	Straight						
BT-HD-CS2211-1020-D	2	10	20	Curved	Straight						
BT-HD-CS2111-1116-D	2	11	16	Straight	Straight						
BT-HD-CS2111-1120-D	2	11	20	Straight	Straight						
BT-HD-CS2111-1125-D	2	11	25	Straight	Straight						

Set contains:

HD Catheter x 1, Stepped Dilator x 1

Remarks:

We can customize according to your design and requirements. Other catheter lengths (12 cm to 25 cm) are available upon request.

HD Catheter Kit with Y-shaped Introducer Needle + Nitinol guidewire + Dilator

Code	No. of Lumen	Size (Fr)	Length (cm)	Extension Tube	Catheter	Code	No. of Lumen	Size (Fr)	Length (cm)	Extension Tube	Catheter
BT-HD-KS2111-1112-NY-1D	2	11	12	Straight	Straight	BT-HD-KS2111-1212-NY-1D	2	12	12	Straight	Straight
BT-HD-KS2111-1113-NY-1D	2	11	13	Straight	Straight	BT-HD-KS2111-1213-NY-1D	2	12	13	Straight	Straight
BT-HD-KS2111-1115-NY-1D	2	11	15	Straight	Straight	BT-HD-KS2111-1215-NY-1D	2	12	15	Straight	Straight
BT-HD-KS2111-1116-NY-1D	2	11	16	Straight	Straight	BT-HD-KS2111-1216-NY-1D	2	12	16	Straight	Straight
BT-HD-KS2111-1120-NY-1D	2	11	20	Straight	Straight	BT-HD-KS2111-1220-NY-1D	2	12	20	Straight	Straight
BT-HD-KS2111-1124-NY-1D	2	11	24	Straight	Straight	BT-HD-KS2111-1224-NY-1D	2	12	24	Straight	Straight
BT-HD-KS2111-1125-NY-1D	2	11	25	Straight	Straight	BT-HD-KS2111-1225-NY-1D	2	12	25	Straight	Straight
BT-HD-KS2211-1112-NY-1D	2	11	12	Curved	Straight	BT-HD-KS2211-1212-NY-1D	2	12	12	Curved	Straight
BT-HD-KS2211-1113-NY-1D	2	11	13	Curved	Straight	BT-HD-KS2211-1213-NY-1D	2	12	13	Curved	Straight
BT-HD-KS2211-1115-NY-1D	2	11	15	Curved	Straight	BT-HD-KS2211-1215-NY-1D	2	12	15	Curved	Straight
BT-HD-KS2211-1116-NY-1D	2	11	16	Curved	Straight	BT-HD-KS2211-1216-NY-1D	2	12	16	Curved	Straight
BT-HD-KS2211-1120-NY-1D	2	11	20	Curved	Straight	BT-HD-KS2211-1220-NY-1D	2	12	20	Curved	Straight
BT-HD-KS2211-1124-NY-1D	2	11	24	Curved	Straight	BT-HD-KS2211-1224-NY-1D	2	12	24	Curved	Straight
BT-HD-KS2211-1125-NY-1D	2	11	25	Curved	Straight	BT-HD-KS2211-1225-NY-1D	2	12	25	Curved	Straight
BT-HD-KS2111-11512-NY-1D	2	11.5	12	Straight	Straight	BT-HD-KS2111-13512-38NY	2	13.5	12	Straight	Straight
BT-HD-KS2111-11513-NY-1D	2	11.5	13	Straight	Straight	BT-HD-KS2111-13513-38NY	2	13.5	13	Straight	Straight
BT-HD-KS2111-11515-NY-1D	2	11.5	15	Straight	Straight	BT-HD-KS2111-13515-38NY	2	13.5	15	Straight	Straight
BT-HD-KS2111-11516-NY-1D	2	11.5	16	Straight	Straight	BT-HD-KS2111-13516-38NY	2	13.5	16	Straight	Straight
BT-HD-KS2111-11520-NY-1D	2	11.5	20	Straight	Straight	BT-HD-KS2111-13520-38NY	2	13.5	20	Straight	Straight
BT-HD-KS2111-11524-NY-1D	2	11.5	24	Straight	Straight	BT-HD-KS2111-13524-38NY	2	13.5	24	Straight	Straight
BT-HD-KS2111-11525-NY-1D	2	11.5	25	Straight	Straight	BT-HD-KS2111-13525-38NY	2	13.5	25	Straight	Straight
BT-HD-KS2211-11512-NY-1D	2	11.5	12	Curved	Straight	BT-HD-KS2211-13512-38NY	2	13.5	12	Curved	Straight
BT-HD-KS2211-11513-NY-1D	2	11.5	13	Curved	Straight	BT-HD-KS2211-13513-38NY	2	13.5	13	Curved	Straight
BT-HD-KS2211-11515-NY-1D	2	11.5	15	Curved	Straight	BT-HD-KS2211-13515-38NY	2	13.5	15	Curved	Straight
BT-HD-KS2211-11516-NY-1D	2	11.5	16	Curved	Straight	BT-HD-KS2211-13516-38NY	2	13.5	16	Curved	Straight
BT-HD-KS2211-11520-NY-1D	2	11.5	20	Curved	Straight	BT-HD-KS2211-13520-38NY	2	13.5	20	Curved	Straight
BT-HD-KS2211-11524-NY-1D	2	11.5	24	Curved	Straight	BT-HD-KS2211-13524-38NY	2	13.5	24	Curved	Straight
BT-HD-KS2211-11525-NY-1D	2	11.5	25	Curved	Straight	BT-HD-KS2211-13525-38NY	2	13.5	25	Curved	Straight

Kit components:

HD Catheter x 1, Injection cap x 2, Syringe x 1, Y-shape Introducer needle x 1, Dilator (1D : Stepped Dilator x 1 : Blank : tissue dilator x 2), Nitinol Guidewire x 1(N : 0.035" : 38N : 0.038"), Scalpel x 1, Wound Dressing x 1, Drape x 1.

Remarks:

1. We can customize according to your design and requirements. Other catheter lengths (12 cm to 25 cm) are available upon request.
2. We also offer options for 0.035" and 0.038" stainless steel guide wires.
3. We also offer tissue dilators(2 pcs) as options.

HD Catheter Kit with Blue Guidewire Introducer Syringe + Nitinol guidewire + Dilator

Code	No. of Lumen	Size (Fr)	Length (cm)	Extension Tube	Catheter	Code	No. of Lumen	Size (Fr)	Length (cm)	Extension Tube	Catheter
BT-HD-KS2111-1112-NB-1D	2	11	12	Straight	Straight	BT-HD-KS2111-1212-NB-1D	2	12	12	Straight	Straight
BT-HD-KS2111-1113-NB-1D	2	11	13	Straight	Straight	BT-HD-KS2111-1213-NB-1D	2	12	13	Straight	Straight
BT-HD-KS2111-1115-NB-1D	2	11	15	Straight	Straight	BT-HD-KS2111-1215-NB-1D	2	12	15	Straight	Straight
BT-HD-KS2111-1116-NB-1D	2	11	16	Straight	Straight	BT-HD-KS2111-1216-NB-1D	2	12	16	Straight	Straight
BT-HD-KS2111-1120-NB-1D	2	11	20	Straight	Straight	BT-HD-KS2111-1220-NB-1D	2	12	20	Straight	Straight
BT-HD-KS2111-1124-NB-1D	2	11	24	Straight	Straight	BT-HD-KS2111-1224-NB-1D	2	12	24	Straight	Straight
BT-HD-KS2111-1125-NB-1D	2	11	25	Straight	Straight	BT-HD-KS2111-1225-NB-1D	2	12	25	Straight	Straight
BT-HD-KS2211-1112-NB-1D	2	11	12	Curved	Straight	BT-HD-KS2211-1212-NB-1D	2	12	12	Curved	Straight
BT-HD-KS2211-1113-NB-1D	2	11	13	Curved	Straight	BT-HD-KS2211-1213-NB-1D	2	12	13	Curved	Straight
BT-HD-KS2211-1115-NB-1D	2	11	15	Curved	Straight	BT-HD-KS2211-1215-NB-1D	2	12	15	Curved	Straight
BT-HD-KS2211-1116-NB-1D	2	11	16	Curved	Straight	BT-HD-KS2211-1216-NB-1D	2	12	16	Curved	Straight
BT-HD-KS2211-1120-NB-1D	2	11	20	Curved	Straight	BT-HD-KS2211-1220-NB-1D	2	12	20	Curved	Straight
BT-HD-KS2211-1124-NB-1D	2	11	24	Curved	Straight	BT-HD-KS2211-1224-NB-1D	2	12	24	Curved	Straight
BT-HD-KS2211-1125-NB-1D	2	11	25	Curved	Straight	BT-HD-KS2211-1225-NB-1D	2	12	25	Curved	Straight
BT-HD-KS2111-11512-NB-1D	2	11.5	12	Straight	Straight	BT-HD-KS2111-13512-38NB	2	13.5	12	Straight	Straight
BT-HD-KS2111-11513-NB-1D	2	11.5	13	Straight	Straight	BT-HD-KS2111-13513-38NB	2	13.5	13	Straight	Straight
BT-HD-KS2111-11515-NB-1D	2	11.5	15	Straight	Straight	BT-HD-KS2111-13515-38NB	2	13.5	15	Straight	Straight
BT-HD-KS2111-11516-NB-1D	2	11.5	16	Straight	Straight	BT-HD-KS2111-13516-38NB	2	13.5	16	Straight	Straight
BT-HD-KS2111-11520-NB-1D	2	11.5	20	Straight	Straight	BT-HD-KS2111-13520-38NB	2	13.5	20	Straight	Straight
BT-HD-KS2111-11524-NB-1D	2	11.5	24	Straight	Straight	BT-HD-KS2111-13524-38NB	2	13.5	24	Straight	Straight
BT-HD-KS2111-11525-NB-1D	2	11.5	25	Straight	Straight	BT-HD-KS2111-13525-38NB	2	13.5	25	Straight	Straight
BT-HD-KS2211-11512-NB-1D	2	11.5	12	Curved	Straight	BT-HD-KS2211-13512-38NB	2	13.5	12	Curved	Straight
BT-HD-KS2211-11513-NB-1D	2	11.5	13	Curved	Straight	BT-HD-KS2211-13513-38NB	2	13.5	13	Curved	Straight
BT-HD-KS2211-11515-NB-1D	2	11.5	15	Curved	Straight	BT-HD-KS2211-13515-38NB	2	13.5	15	Curved	Straight
BT-HD-KS2211-11516-NB-1D	2	11.5	16	Curved	Straight	BT-HD-KS2211-13516-38NB	2	13.5	16	Curved	Straight
BT-HD-KS2211-11520-NB-1D	2	11.5	20	Curved	Straight	BT-HD-KS2211-13520-38NB	2	13.5	20	Curved	Straight
BT-HD-KS2211-11524-NB-1D	2	11.5	24	Curved	Straight	BT-HD-KS2211-13524-38NB	2	13.5	24	Curved	Straight
BT-HD-KS2211-11525-NB-1D	2	11.5	25	Curved	Straight	BT-HD-KS2211-13525-38NB	2	13.5	25	Curved	Straight

Kit components:

HD Catheter x 1, Injection cap x 2, Introducer Syringe x 1, Introducer needle x 1, Dilator (1D : Stepped Dilator x 1 : Blank : tissue dilator x 2), Nitinol Guidewire x 1(N : 0.035" : 38N : 0.038"), Scalpel x 1, Wound Dressing x 1, Drape x 1.

Remarks:

1. We can customize according to your design and requirements. Other catheter lengths (12 cm to 25 cm) are available upon request.
2. We also offer options for 0.035" and 0.038" stainless steel guide wires.
3. We also offer tissue dilators(2 pcs) as options.

HD Catheter Kit with Nitinol guidewire + Dilator

Code	No. of Lumen	Size (Fr)	Length (cm)	Extension Tube	Catheter	Code	No. of Lumen	Size (Fr)	Length (cm)	Extension Tube	Catheter
BT-HD-KS2111-1112-N-1D	2	11	12	Straight	Straight	BT-HD-KS2111-1212-N-1D	2	12	12	Straight	Straight
BT-HD-KS2111-1113-N-1D	2	11	13	Straight	Straight	BT-HD-KS2111-1213-N-1D	2	12	13	Straight	Straight
BT-HD-KS2111-1115-N-1D	2	11	15	Straight	Straight	BT-HD-KS2111-1215-N-1D	2	12	15	Straight	Straight
BT-HD-KS2111-1116-N-1D	2	11	16	Straight	Straight	BT-HD-KS2111-1216-N-1D	2	12	16	Straight	Straight
BT-HD-KS2111-1120-N-1D	2	11	20	Straight	Straight	BT-HD-KS2111-1220-N-1D	2	12	20	Straight	Straight
BT-HD-KS2111-1124-N-1D	2	11	24	Straight	Straight	BT-HD-KS2111-1224-N-1D	2	12	24	Straight	Straight
BT-HD-KS2111-1125-N-1D	2	11	25	Straight	Straight	BT-HD-KS2111-1225-N-1D	2	12	25	Straight	Straight
BT-HD-KS2211-1112-N-1D	2	11	12	Curved	Straight	BT-HD-KS2211-1212-N-1D	2	12	12	Curved	Straight
BT-HD-KS2211-1113-N-1D	2	11	13	Curved	Straight	BT-HD-KS2211-1213-N-1D	2	12	13	Curved	Straight
BT-HD-KS2211-1115-N-1D	2	11	15	Curved	Straight	BT-HD-KS2211-1215-N-1D	2	12	15	Curved	Straight
BT-HD-KS2211-1116-N-1D	2	11	16	Curved	Straight	BT-HD-KS2211-1216-N-1D	2	12	16	Curved	Straight
BT-HD-KS2211-1120-N-1D	2	11	20	Curved	Straight	BT-HD-KS2211-1220-N-1D	2	12	20	Curved	Straight
BT-HD-KS2211-1124-N-1D	2	11	24	Curved	Straight	BT-HD-KS2211-1224-N-1D	2	12	24	Curved	Straight
BT-HD-KS2211-1125-N-1D	2	11	25	Curved	Straight	BT-HD-KS2211-1225-N-1D	2	12	25	Curved	Straight
BT-HD-KS2111-11512-N-1D	2	11.5	12	Straight	Straight	BT-HD-KS2111-13512-38N	2	13.5	12	Straight	Straight
BT-HD-KS2111-11513-N-1D	2	11.5	13	Straight	Straight	BT-HD-KS2111-13513-38N	2	13.5	13	Straight	Straight
BT-HD-KS2111-11515-N-1D	2	11.5	15	Straight	Straight	BT-HD-KS2111-13515-38N	2	13.5	15	Straight	Straight
BT-HD-KS2111-11516-N-1D	2	11.5	16	Straight	Straight	BT-HD-KS2111-13516-38N	2	13.5	16	Straight	Straight
BT-HD-KS2111-11520-N-1D	2	11.5	20	Straight	Straight	BT-HD-KS2111-13520-38N	2	13.5	20	Straight	Straight
BT-HD-KS2111-11524-N-1D	2	11.5	24	Straight	Straight	BT-HD-KS2111-13524-38N	2	13.5	24	Straight	Straight
BT-HD-KS2111-11525-N-1D	2	11.5	25	Straight	Straight	BT-HD-KS2111-13525-38N	2	13.5	25	Straight	Straight
BT-HD-KS2211-11512-N-1D	2	11.5	12	Curved	Straight	BT-HD-KS2211-13512-38N	2	13.5	12	Curved	Straight
BT-HD-KS2211-11513-B-1D	2	11.5	13	Curved	Straight	BT-HD-KS2211-13513-38N	2	13.5	13	Curved	Straight
BT-HD-KS2211-11515-B-1D	2	11.5	15	Curved	Straight	BT-HD-KS2211-13515-38N	2	13.5	15	Curved	Straight
BT-HD-KS2211-11516-B-1D	2	11.5	16	Curved	Straight	BT-HD-KS2211-13516-38N	2	13.5	16	Curved	Straight
BT-HD-KS2211-11520-B-1D	2	11.5	20	Curved	Straight	BT-HD-KS2211-13520-38N	2	13.5	20	Curved	Straight
BT-HD-KS2211-11524-B-1D	2	11.5	24	Curved	Straight	BT-HD-KS2211-13524-38N	2	13.5	24	Curved	Straight
BT-HD-KS2211-11525-B-1D	2	11.5	25	Curved	Straight	BT-HD-KS2211-13525-38N	2	13.5	25	Curved	Straight

Kit components:

HD Catheter x 1, Injection cap x 2, Introducer Syringe x 1, Introducer needle x 1, Dilator (1D : Stepped Dilator x 1 ; Blank : tissue dilator x 2), Nitinol Guidewire x 1(N : 0.035" ; 38N : 0.038"), Scalpel x 1, Wound Dressing x 1, Drape x 1.

Remarks:

1. We can customize according to your design and requirements. Other catheter lengths (12 cm to 25 cm) are available upon request.
2. We also offer options for 0.035" and 0.038" stainless steel guide wires.
3. We also offer tissue dilators(2 pcs) as options.

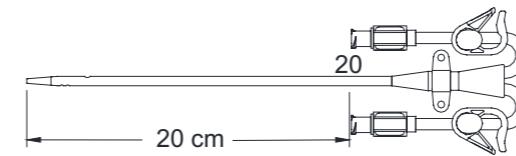
Hemodialysis Catheter Kit



Specification of Contents

Code:BT-HD-KS2211-1220-NY-1D

12 FR x 20cm
Dual lumen / Soft tip
Straight Catheter / Curved Extension
Priming volume: Arterial/Proximal:1.5ml
Venous/Distal:1.6ml



Contents :

- (1)Dual Lumen Catheter : 12Fr X 20cm Radiopaque Polyurethane with Enhanced Radiopaque Blue Soft Tip.
- (2)Injection Caps
- (1)Syringe - 5ml Luer Slip
- (1)Scalpel - #11
- (1)Stepped Dilator - 12Fr x 15cm
- (1)Wound Dressing
- (1)Drape : 60cm x 60cm
- (1)Y-Shape Introducer Needle - 18G x 7cm
- (1)J - Tip Nitinol Guidewire - 0.035" x 72cm,Marked

Manufactured in Taiwan

BIOTEQ[®]
Improving lives



CONTACT US



For more information, please contact:
sales@bioteq.com.tw

BIOTEQUE CORPORATION

5F-6, No.23, Sec.1, Chang-An E. Rd.,
Taipei 104, Taiwan

Phone: (886)-2-2571-0269, Fax: (886)-2-2536-1967

<http://www.bioteq.com.tw>

ISO 13485, GMP, CE Certified

© Bioteque Corp. Sep. 2024
Brochure number: BT-ADC-04